

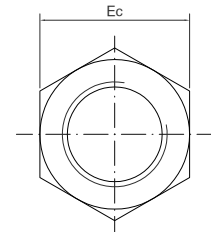
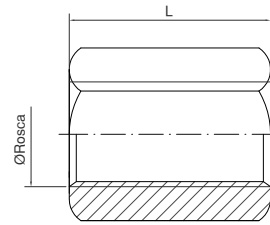
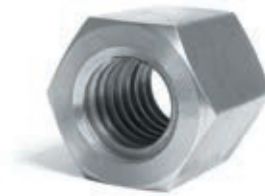
TUERCAS

Nuts
Écrous

Tuerca acero hexagonal

Hexagonal nut
Écrou hexagonal

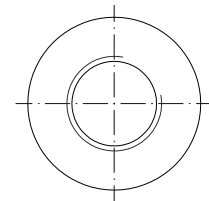
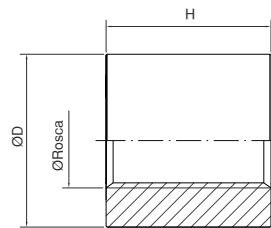
Rosca Thread Filetage	ALTO (L)	ANCHO (Ec)
12X3	21	22
15X3	22	24
16X4	24	27
18X4	25	27
20X4	30	30
22X5	32	30
24X5	36	36
28X5	42	46
30X6	45	46
32X6	45	46
36X6	54	55
40X7	60	65
50X8	75	75
60X9	90	90



Tuerca acero lisa

Smooth steel nut
Écrou acier lisse

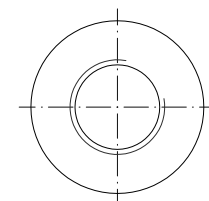
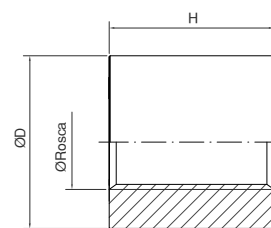
Rosca Thread Filetage	ALTO (L)	ANCHO (Ec)
16X4	36	24
18X4	40	27
20X4	45	30
24X5	50	36
30X6	60	45
40X7	80	60
50X8	90	75
60X9	90	90



Tuerca bronce lisa

Smooth bronze nut
Écrou bronze lisse

Rosca Thread Filetage	ALTO (L)	ANCHO (Ec)
12X3	20	20
15X3	40	24
16X4	40	24
18X4	40	24
20X4	40	30
22X5	40	30
24X5	40	30
25X5	40	30
28X5	50	40
30X6	60	45
32X6	60	45
36X6	70	54
40X7	80	60
50X8	80	70
60X9	90	90



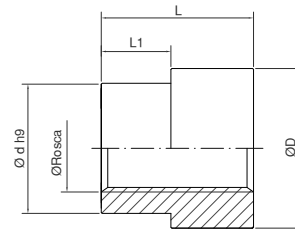
TUERCAS

Nuts
Écrous

Tuerca bronce brida

Bronze flange nut
Écrou avec bride bronze

Rosca Thread Filetage	ØD	ALTO (L)	Ød	ANCHO (Ec)
15X3	49	32	40	22
16X4	49	32	40	22
18X4	49	32	40	22
20X4	49	32	40	22
24X5	49	32	40	22
28X5	64	40	50	20
30X6	64	40	50	20
32X6	64	40	50	20
36X6	84	60	70	40
40X7	84	60	70	40
50X8	109	75	90	50
60X9	109	75	90	50



Tuerca brida de acero y casquillo de bronce

Steel flange nut with bronze bush
Écrou avec bride acier et douille bronze

Rosca Thread Filetage	ØD1	ØD2	ØD3	ØD4	ANCHO (L)	ANCHO (B)	TALADROS
15X3	60	50	38	25	25	10	3 x M6
16X4	70	55	42	30	30	12	4 x M6
18X4	80	65	52	35	37	12	4 x M6
20X4	100	82	65	45	45	16	4x M6
24X5	110	93	75	55	60	16	6x M8
28X5	110	93	75	55	60	16	6 x M8
30X6	135	113	90	65	75	18	6 x M10
32X6	155	129	105	75	90	22	6 x M12
36X6	175	145	120	90	105	27	6 x M12

